



KANSAS GEOLOGICAL SOCIETY

BULLETIN

Volume 100 Number 3

May - June 2026

Established 1925

IN THIS ISSUE

7th Biennial AAPG MCS Field Conference Announcement pages 8-12

Historic Photo Display gifted by Corry Tinsmon to KGS Library pg 13



Your 1/8 page ad here

**Use Your KGS Library
For All Your Printing Needs**

Old photos?
Old documents?

We can scan them for you!

Robert F. Walters Digital Library

The most complete source for Kansas data

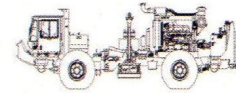
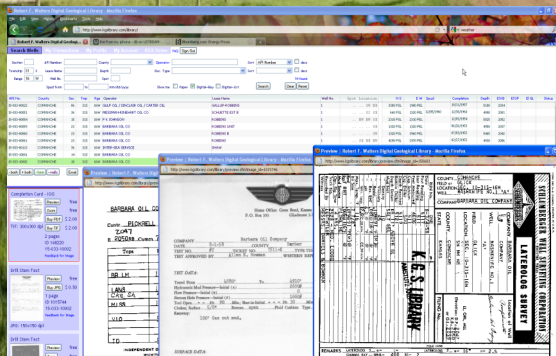
Database updated nightly

Day or Night

You can get to the data as you need it

www.kgslibrary.com

To Join: call 316-265-8676



*Proudly Celebrating 25+ Years
Acquiring Seismic Data Throughout the
Continental United States*

WICHITA

Nicolle Jausel
(316) 636-5552

Nicolle@paragongeo.com

DENVER

Kim Nordberg
(303) 888-8885

Knordberg@paragongeo.com

HOUSTON

Brent Propst
(832) 643-5158

Bpropst@paragongeo.com

OKLAHOMA CITY

Joe Broussard
(405) 213-9859

Jbroussard@paragongeo.com

website: www.paragongeo.com

We Invite You

To join the

***Kansas Geological
Foundation***

*\$50.00 membership is
tax deductible*

Call 316-265-8676

Or send checks to:

Kansas Geological Foundation

1704 S. Baehr

Wichita, KS 67209

Table of Contents

Features:

KGS Events: **no events scheduled**

Departments & Columns:

| | |
|--|--------------|
| KGS Tech Talks | 4 |
| Advertiser's Directory | 7 |
| In Memoriam | 17 |
| Professional Directory | 18 |
| Kansas Geological Foundation Cornerstone and KGF News | 21-23 |
| Kansas Geological Foundation Memorials | 24-26 |

ON THE COVER:

Gilbert-Style Delta, Washington

Photo by Marli Miller

The Kansas Geological Society Bulletin, which is published bimonthly in electronic format, seeks short papers dealing with any aspect of Kansas geology, including petroleum geology, studies of producing oil or gas fields, and outcrop or conceptual studies. Maximum length of papers is 6 pages as they appear in the Bulletin, including text, references, figures and/or tables, and figure/table captions. Inquiries regarding manuscripts should be sent to manager@kgslibrary.com or mailed to 1704 S. Baehr, Wichita, KS 67209. Specific guidelines for manuscript submission appear in each issue of the Bulletin, which can also be accessed on-line at the Kansas Geological Society web site at <http://www.kgslibrary.com>

SOCIETY Technical Meetings

All Technical Meetings will be on Zoom

No tech meetings scheduled

Please remember to check the website for the most up to date information on Technical Talks

<http://www.kgslibrary.com/techtalks.cfm>

Note: For those geologists who need 30 professional development hours (pdh) to renew their licenses, there will be a sign-in sheet at each presentation and also a certificate of attendance.



The New Home of the KGS

1704 S. Baehr

KANSAS GEOLOGICAL SOCIETY



BOARD OF DIRECTORS

PRESIDENT

Tyler Sanders

PRESIDENT-ELECT

Dave Barker

SECRETARY

Kyle Day

TREASURER

Jared Lies

DIRECTORSRyan Davis
Seth Evenson
Richard Jordan**ADVISOR**

Roger Martin

BULLETIN STAFF

EDITOR

Wesley Hansen (316) 772-6188

ADVERTISING

Kent Scribner (316) 640-1154

MEMORIALS

Wesley Hansen (316) 772-6188

STATE SURVEY

KS Geological Survey (785) 864-3965

SOCIETY NEWS

KGS Library (316) 265-8676

MANAGER

Seth Evenson (316) 265-8676

COMMITTEE CHAIRMEN

Advertising

Kent Scribner

AdvisoryAnnual Banquet

Doug Davis

Bulletin

Wesley Hansen

Computer CommitteeContinuing EducationDistinguished Awards

Brian Fisher

Environmental

Kent Matson

Field Trip

Jerry Honas

Fishing TournamentFuture PlansGolf

Dave Barker

HistorianLibrary

Ted Jochems

Membership

Larry Friend

Nomenclature

John H. Morrison, III

Picnic

Beth Isern

Public RelationsShooting Tournament

Seth Evenson

Technical Programs

Doug Davis

Technical Committee

Ryan Dixon

Finance Committee

Members: Chuck Brewer,

David Doyel, Paul Gunzelman and Tom Funk

K.G.S. LIBRARY

PHONE 316-265-8676 **FAX** 316-265-1013email: frontdesk@kgslibrary.com orWeb: www.kgslibrary.com

A.A.P.G. DELEGATE

Dennis Hedke

2026

The KGS *Bulletin* is published bi-monthly by the Kansas Geological Society, with offices at 1704 S. Baehr, Wichita, Kansas 67209 Copyright 2024, The Kansas Geological Society. The purpose of the *Bulletin* is to keep members informed of the activities of the Society and to encourage the exchange and dissemination of technical information related to the Geological profession. Subscription to the *Bulletin* is by membership in the Kansas Geological Society. Limited permission is hereby given by the KGS to photocopy any material appearing in the KGS *BULLETIN* for the non-commercial purpose of scientific or educational advancement. The KGS, a scientific society, neither adopts nor supports positions of advocacy, we provide this and other forums for the presentation of diverse opinions and positions. Opinions presented in these publications do not reflect official positions of the Society.



Nine Trucks Serving

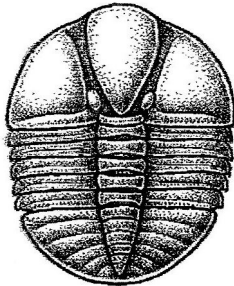
Kansas--Colorado--Texas--Nebraska--Illinois

DST's

Back Pressure testing (G1 7 G2)

Slick line services using the same Weatherford

Electronic Pressure Gauges used on DST's



1-800-728-5369

FAX 1-785-625-5620

www.trilobitetesting.com

trilobite@eaglecom.net

SHOPS LOCATED IN:

Hays, KS

Scott City, KS

Pratt, KS

Oberlin, KS

CAN YOU NAME THE CRITTER?

Sponsored by Trilobite Testing, Inc.

Is your paleo up to date?

If you know the name of the trilobite,
submit your guess via e-mail to
manager@kgslibrary.com

Remember that *Trilobite Testing* is
sponsoring your efforts, so be sure to thank
Paul Simpson the next time you see him.

**Bulletin committee members and PhD's in
Paleontology are prohibited from entering.**



AAPG Image August 17-20, 2026
Houston, TX

7th Biennial AAPG MCS Field Conference
Oklahoma State University
October 2-4, 2026
Hosted by Tulsa Geological Society

Log in to

Walters Digital Library At

www.kgslibrary.com

Log in as our guest

and see the Society's Database

A convenient way to see what you might want to
order!

Call or email your order to:

316-265-8676

frontdesk@kgslibrary.com

ADVERTISER'S DIRECTORY

| | <i>page</i> |
|-----------------------------------|-------------|
| Duke Drilling | 26 |
| Kansas Geological Foundation | 20 |
| Murfin Drilling Company, Inc | 26 |
| PARAGON Geophysical Services, Inc | 2 |
| Professional Directory | 18 |
| Trilobite Testing | 6 |
| Walters Digital Library | 2 |

ADVERTISER'S RATES: 2025

| Full Page | B&W | Color |
|--|---------|---------|
| 6 issues | \$2,000 | \$2,500 |
| 3 issues | \$1,080 | \$1,325 |
| 1 issue | \$480 | \$525 |
| 1/2 Page | | |
| 6 issues | \$1,000 | \$1,500 |
| 3 issues | \$540 | \$825 |
| 1 issue | \$225 | \$350 |
| 1/4 Page | | |
| 6 issues | \$600 | \$900 |
| 3 issues | \$325 | \$525 |
| 1 issue | \$150 | \$250 |
| 1/8 Page | | |
| 6 issues | \$300 | \$500 |
| 3 issues | \$175 | \$325 |
| 1 issue | \$75 | \$185 |
| Professional Ad (Business Card) | | |
| 6 issues | \$90 | \$180 |

7th BIENNIAL AAPG MID-CONTINENT SECTION FIELD CONFERENCE

OKLAHOMA STATE UNIVERSITY

OCTOBER 2-4, 2026

Geoscience Integration of Hydrology and Petroleum Geology Along the Seminole -Cushing Ridge and the Arbuckle-Simpson Aquifer, Eastern and Southern Oklahoma

Course Leadership

Dr. Todd Halihan, Dr. Brandon Spencer, Lawrence Walker, John Brett



Background and Significance

For more than a century, the Arbuckle-Simpson (Cambro-Ordovician) and “Vamoosa Group” (Late Carboniferous) bedrock aquifers in Oklahoma have supported regional growth by supplying water to rural residents and larger communities, including Tulsa. Over the same period, the petroleum industry has extracted, stored, transported, and refined billions of barrels of oil and gas equivalent from formations beneath and adjacent to these aquifers. Together, these water and energy systems extend from the East Davis and Fitts “Pool” oil fields in the south northward through the Seminole-Cushing Uplift into Osage County.

Course Focus and Approach: Surface to Basement Integration

Automated computing workflows have improved understanding of connected pore systems. In this course, participants will examine outcrops and subsurface sites tied to aquifer evaluation and oil field pressure maintenance while discussing geologic scale and reservoir connectivity. Exercises will use remote sensing data from the Arbuckle-Simpson Uplift, borehole cross-sections, 3D frameworks, and a Virgilian aquifer geologic model developed in SLB’s Petrel software.

Field Trip Itinerary

Friday, 02 Oct 2026, Stillwater, OK

At the AAPG General Meeting, there will be a short introduction to the course, regional context, core and outcrop examples and an overview of the next day's field activities, including safety and logistics. We will also introduce the Oilton stop and exercise.

Saturday, 03 Oct 2026, Day 1

Stop 1: Ada Formation Outcrop near Oilton

North of Oilton on HWY 99. Decent exposure with a nice capping ?crevasse splay and/or laterally stacking thin beds? and a thesis in the area to reference. Brandon Spencer will provide an overview of this stop, which contains the thin lime marker known as the Le Compton near top of Ada / Base of Vamoosa formations. Lawrence has a Petrel datumed and scaled cross section exercise for teams of two (hopefully one hydro + one petrol person). It includes the outcrop, 6 petroleum industry wells, local tops and 3 nearby water wells with "strip log" lithology descriptions.

Stop 2: Cushing Tank Farm Overlook

Short stop to view the key oil storage and transport facility of the United State, which sits on the Virgilian Vanoss Formation. It's about a mile west of 377 on a gravel road.

Stop 3: Sac and Fox Reservation Casino Parking Area

Review and discussion of USGS Report 96-4173 published in 1998 in cooperation with the SAC AND FOX NATION. The purpose of the USGS project was to evaluate the freshwater resources of tribal land on Deep Fork River in eastern Lincoln County, Oklahoma. One scenario was saltwater incursion from water injection into deeper Marmaton (Calvin) Formation.

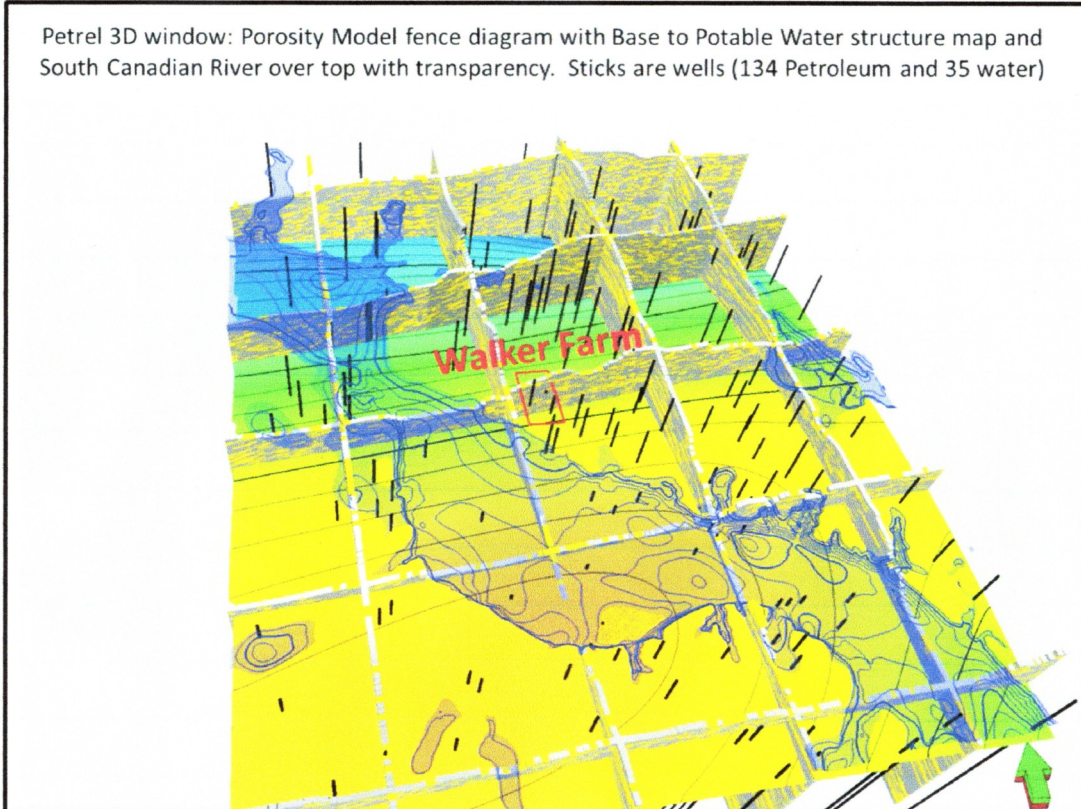
Status Comments – May 2026: Builds on 1995 vintage Marvin Abbott USGS work (see details below) with addition of petroleum well logs from MJ Lawrence exported as TIF images, imported into Petrel and depth stretched for correlation and tops generation. Gives a much clearer picture of the petroleum reservoir and shallower water well "geophysical" well logs Marvin used which Lawrence is also snipping and loading as images into Petrel as wells with locations and elevations for correlation. Hope it generates much discussion between the sub-disciplines as to workflows / details / requirements and such. Along with new well correlations, could (possibly) gen a HC prod zone map (CALVIN SS) and/or 3D framework of the immediate area to illustrate the aquifer to oil reservoir relationships, as time and data allow. Lawrence has purchased and correlated 30+

Petroleum wells in the immediate area and started working Petrel aspects during the April work sessions in Stillwater.

Lawrence and Brandon need to check-in with Tribal Officer(s).

Stops 4a and 4b: Virgilian Bedrock Aquifer above Hunton and Senora Petroleum Reservoirs, Southwest Konawa Field, Northern Arbuckle Uplift Boundary

Petrel 3D window: Porosity Model fence diagram with Base to Potable Water structure map and South Canadian River over top with transparency. Sticks are wells (134 Petroleum and 35 water)



After a brief stop at the basal Virgilian Boley Agate Member (base of the Vamoosa Group) north of Ada, Oklahoma, the class will continue west to Walker Farm southwest of Konawa. On the north bank of the South Canadian River, participants will hike to an overlook with views toward Sulphur and Fittstown. An optional short hike will then lead to a nearby creek exposure of sandstone with “3D” bedding in the Vanoss Formation of the Virgilian aquifer. The class will then visit an active oil well, producing from the Hunton formation since 1941, and discuss old wells and subsurface relationships using an approximately 30-square-mile

Petrel 3D Virgilian geologic model and deeper mapped surfaces of the underlying formations and oil reservoirs.

Stops 5 & 6: Basement Outcrop and the Eastern Arbuckle-Simpson Aquifer juxtaposition to a Giant Oilfield

Departing Konawa, the next stop will be on the RoyKRanch Meadow south of Connerville, OK, where we will visit an excellent exposure the faulted sedimentary section on the Tishomingo Granite basement and observe fresh water discharge from the Arbuckle-Simpson Aquifer in outcrop.

Participants will then proceed ~20 miles to the north to the eastern edge of the Arbuckle-Simpson Aquifer and visit the active research site. After a short drive to the east, teams will correlate well logs and examine fault relationships while standing in the nearby giant Fitts "Pool" Oilfield (1920's disc). Datasets reviewed will include subsurface well data, 2D seismic, recent near surface remote sensing data and a 3D structural framework based on past work by Dr. Jim Puckett, along with a 1995 "oil" thesis with recently added well correlations and subsurface aquifer data.

***** END OF DAY 1**

Sunday, 04Oct2026 Day 2

Stop 1: Woodford and Hunton Anticline Stop South of Arbuckle Lake Dam

After an excellent view from the front, an exercise including well data from the backside (to the south) of the fold will help set up the area hydrocarbon correlations northward towards Sulfur and the Vendome artesian well and springs.

Stop 2: Vendome Well Western Edge of the Arbuckle - Simpson Aquifer, Sulphur, OK

The field trip effectively ends on the Arbuckle Uplift near Sulphur, where both the aquifers and hydrocarbon system formations are observed at the surface and via downhole well logs from nearby boreholes.

Having just visited a key hydrocarbon systems site at the Hunton and Woodford outcrop near Daugherty, the next two stops will be at the Vanoss "Conglomerate" on Bromide Hill followed by the final stop with an exercise at the Vendome well, situated on the western edge of the expansive (500+ square mile) Arbuckle-Simpson Aquifer and 1-2 miles from the eastern edge of the East Davis oilfield.

Activities will conclude with practical Geoscience exercises from both disciplines:

- Correlation of East Davis field from west to east adjacent to the aquifer using East Davis oil field well data for a cross-fault profile
- Hydrologic water flow rate calculation (Todd Hallihan runs with his favorite fruit)

Technical Sessions end with a poster review of a 3D Geologic Framework of the area and discussion of various reservoir fluids, above ground test isotopes, seals and pressure scenarios that may be in play.

Lunch: location and time TBD.

Possible Bonus Stops: Overturned Woodford behind the Arbuckle Pie Shop

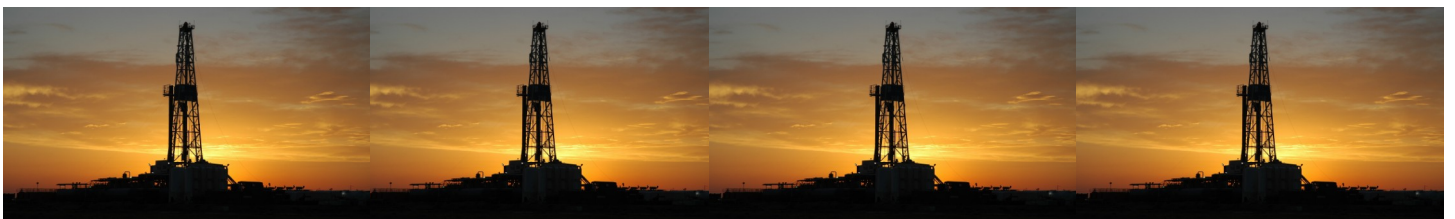
Drive back to Stillwater

Logistics and Safety Considerations

The field trip will commence and end in Stillwater, Oklahoma, with the group departing for Oilton. Restroom facilities will be accessible at multiple points each day. Ample water, snacks, and sack lunches will be provided on both days. Optional hikes on the first and second day will require participants to climb and descend gentle slopes to access an outcrop of the Vanoss Sandstone and the Woodford and Hunton Anticline; the route will be cleared of obstacles, and safety measures will be implemented to ensure participant wellbeing. First aid supplies and support will be available throughout the trip.

Registration

When registration information is received, this page will be updated.





Photos gifted to the KGS Geological Society by
Corry Tinsmon

Corry Tinsmon gifted to the KGS Library the historic oilfield photographs shown above. They are displayed prominently at the KGS Library. The next time you stop by the Library, take a few moments to examine them. I was informed that these photos were originally owned by Albert Abercrombie.

2026 KGS Board

President - Tyler Sanders VP-President Elect - Dave Barker

Secretary - Kyle Day Treasurer - Jared Lies

Directors - Ryan Davis Seth Evenson

Richard Jordan - Director at Large

**We Invite You
To join**

***Kansas
Geological
Foundation***

***\$50.00 membership is
tax deductible***

***Call 316-265-8676
Or send checks to:
Kansas Geological Foundation
1704 S. Baehr
Wichita, KS 67209***

Your Company

1/4 page ad

here

An Open Invitation to Young Geologists to Join AAPG

I would like to extend a special invitation to recent graduates and other young geological professionals to join AAPG. There are many young geologists outside the Wichita area that I have never met. They may work out of Great Bend or Hays, Kansas working with smaller oil and gas producers or working on their own as well site geologists. Kansas does have a future for the foreseeable future. The time is now to meet others from larger regional companies to forge a relationship for future employment. Young minds will be needed to replace those retiring and that other bad option.

I joined AAPG late in my career, much to my regret. I now serve voluntarily on the AAPG MCS committee for our convention in Oklahoma City from October 7-9, 2025.

Respectfully yours,

Wesley D. Hansen Bulletin Editor



Robert F. Walters Digital Library

Log in as our Guest

username: guest

password: guest



316-265-8676

**Let Us Print Your Geo Reports
And Save Your Time For Finding More Oil & Gas**

Top Quality Color Printing For Our Membership

Email your files to: kgsorders@gmail.com

**Get Your Maps copied at the KGS library
We can scan, copy, and print up to 44" wide**

Color or Black & White

Solid Color @ \$4.00/sq. ft.

Line maps with color @ \$3.00/sq. ft.

In Memoriam

KGS and Industry Members Lost in 2025 and 2026

2025

James Ross Baird

William H. Petersen

Dennis Michael Gleason

Timothy Dean Hellman

Jay McNiel

2026

Roger Friedly

Robert “Bob” Stolzle



PROFESSIONAL DIRECTORY

Kuljeet Kaur
Geophysical Consultant
 kuljeetiitk@gmail.com
 785-317-5284
 405 Blue Spring Drive
 McKinney, Tx - 75072




- Geophysicist with 16 years at Woolsey Operating; Seismic acquisition and processing support;
- Basic Seismic Solutions (Prospects Evaluation): 2D-3D Seismic Interpretation; Geological & geophysical data integration; Structural & Stratigraphic Interpretation
- Advanced Seismic Solutions: 3D Dip Analysis (Structure Mapping); Curvature Analysis (Fracture Mapping); Coherence and Fault Attributes; Seismic Impedance & 3D Porosity Maps, AVO Attributes; Spectral Decomposition; Detailed Petrophysical Analysis

Macklin Armstrong
Consulting Geologist
 Kansas - Colorado - Nebraska
 Wellsite Supervision Prospect Evaluation
 armstrong.mac@gmail.com
 316-209-5047

WESLEY D. HANSEN
Consulting Geologist
 Well site Supervision • Geologic Studies
 PO Box 46 Whitewater, KS 67154
 Office/Mobile: (316) 772-6188
 whansen4651@sbcglobal.net
 Kansas - Colorado - Nebraska
 44 Continuous Years in the Oil Patch

M. ((Brad))ford Rine, Geologist
Licensed, Registered, Certified

| | |
|----------------------|-------------------------|
| PROSPECT EVALUATION | PROSPECT ORIGATION |
| WELLSITE SUPERVISION | DRLG/COMPL CONSULTATION |
| RESERVOIR STUDIES | PROPERTY EVALUATION |
| EXPERT TESTIMONY | BANJO PICKER |

100 South Main Suite #415
 Wichita, Kansas 67202
 Email: rinemb@sbcglobal.net
 Office & Cell: (316) 250-5941

Covey - The Well Watchers
 "One Thousand Wells and Counting"

Curtis E. Covey Wellsite Petroleum Geologist
 Gas Trailer Cell: 316-217-4679 Office: 316-776-0367
 Email: wellsitgeo1@gmail.com
 6548 Bedford Circle Derby, Kansas 67037
 Gas Detection Trailer & Internet/Phone Communications

ROGER L. MARTIN
Independent Petroleum Geologist
 200 E 1st St, Ste 405, Wichita, KS 67202
 Cell: 316-833-2722 Office: 316-250-6970
 KS Field Cell: 316-655-1227
 Email: rogermartingeo@yahoo.com

Kirk Rundle
Consulting Geophysicist
 3D Seismic Design, Acquisition to Processing QC.,
 Interpretation and Analysis, Subsurface Integration
 7340 W. 21st. N., Ste. 100
 Wichita, Kansas 67205
 Office: 316-721-1421 Fax: 316-721-1843
 Email:kirk@rundlegeo.com

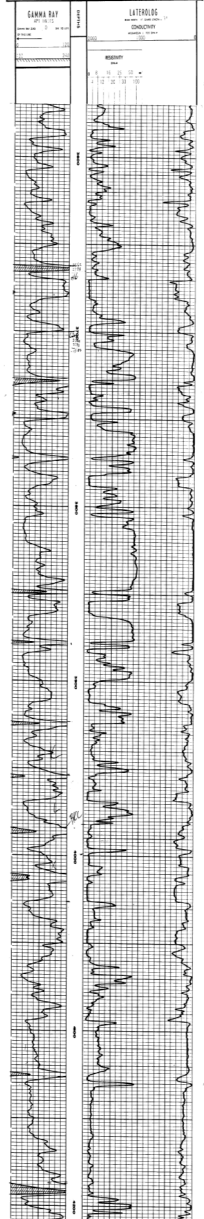
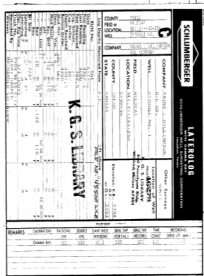
MELLAND ENGINEERING, INC.
Petroleum Engineering & Geological Consulting
James E. Melland, P.E., P.G.
 President
 Office: (620) 241-4621 Fax: (620) 241-2621
 jamesm@mellandengineering.com
 www.mellandengineering.com
 P.O. Box 841, McPherson, KS 67460-0841

IOGSI INDEPENDENT OIL & GAS SERVICE, INC.
Digital Well Data You Can Trust

JOHN H. MORRISON, III
 President

www.IOGsi.com Phone: 316-263-8281
 3909 N. Sweet Bay St. Fax: 316-263-0874
 Wichita, Kansas 67226-3501 Email: jmorrison@iogsi.com

*The KGS Library is pleased to
announce a new service*



Creating
LAS files
from our logs
or yours

**\$20.00 per
curve!!**

**Quick
turn-around**

Send us your log file
or tell us which of
ours you would like
converted.

316-265-8676



**Kansas Geological
Foundation
Video / DVD Collection**

The KGF has an extensive
collection of
videos available for check-out at
no charge.

Only pay for shipping back.

These are ideal for classroom or
general public viewing.

See the web for titles &
descriptions

www.kgfoundation.org

Call 316-265-8676

Ask for Rhonda to check
out videos

A shout out to Kansas Oil and Gas Industry

Service Companies

WTI oil price is hovering around \$80 per barrel

Now is the time to resume advertising in the KGS Bulletin

Let our several hundred members know that your company is still active and ready to work.

Your half page ad would look great here.

Color or black and white

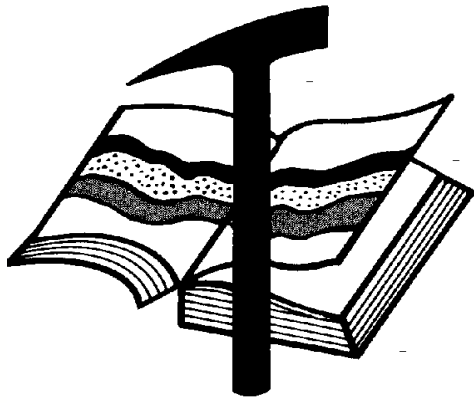
Contact Kent Scribner at 316-640-1154

KGS members please check your files

Fellow KGS members, please remember to check your files of elogs and geologist reports against the KGS paper library and the WDL before discarding them. I was contacted by John Morrison recently about a well I watched years ago that had some tops and DST info missing from his completion card. I took pics from my geo report of tops and DST results and sent them to John to update his card data. If I was to go through all of my files, I'm sure I have many logs and geo reports that are not in the files of either the KGS paper or the WDL. Before I hang things up in my career, I vow to go through all of my data and get it donated and scanned.

KCC rules allow an operator to hold information confidential for a two year period. As long as the well in question is older than the two year period, one can release the data. If one has concerns about alienating a client, of course, feel free to ask for permission.

Wes Hansen



Kansas Geological Foundation

Web Site: www.kgfoundation.org

**212 North Market
Wichita, Kansas 67202**

A not-for-profit educational and scientific corporation

GOALS:

- promote geology and earth science
- preserve geological records
- establish memorials and endowments
- support field trips and seminars
- financial aid and grants to students

PLEASE HELP SUPPORT THE FOUNDATION

Kansas Geological Foundation Services

The Kansas Geological Foundation provides the following services as a part of the organization's commitment to educate the public regarding earth science.

Speaker's Bureau

A list of speakers available to talk about various aspects of geology may be obtained by contacting Wes Hansen at the KGS Library, 265-8676. This service is free to the public.

DVD/Videotape Library

The KGF maintains a DVD & videotape library focused primarily on the various fields of earth science. These tapes may be checked out without charge by the public. To obtain a list of tapes, please contact the KGS Library, 1704 S, Baehr Wichita, KS 67209 or call Wes Hansen at 265-8676.

The Kansas Geological Foundation was founded in March, 1989 as a not-for-profit corporation under the guidelines of section 501(c)(3) of the tax code to provide individuals and corporations the opportunity to further the science of geology. It is dedicated to providing charitable, scientific, literary and educational opportunities in the field of geology for the professional geologist as well as the general public.

KGF can receive in-kind donations through which the donor may receive a tax deduction. Of equal importance, the KGF provides the financial resources to sort, process and file this data at the KGS library. If you have a donation to make, please contact the KGF at 265-8676.

Your tax-deductible membership donation helps to defray the cost of processing donations and to support public education programs about the science of geology. Annual membership begins at \$50.00 per year. Donations of \$100.00 or more are encouraged through the following clubs:

| | |
|-------------------------|------------------|
| Century Club | \$ 100 to \$ 499 |
| \$500 Club | \$ 500 to \$ 999 |
| Millennium Club | \$1000 to \$5000 |
| President's Club | \$5000 and over |

Kansas Geological Foundation

Kansas Geological Foundation News

Spring 2026 KGF Scholarship Recipients

| Name | University | Scholarship | Amount |
|----------------|-----------------------|--------------------|---------------|
| Laikyn Coursen | University of Kansas | KGF Scholarship | \$1000.00 |
| Ethan Geiger | University of Kansas | KGF Scholarship | \$1000.00 |
| Andrew Price | Fort Hays State Univ. | KGF Scholarship | \$1000.00 |
| Kaden Moses | Fort Hays State Univ. | KGF Scholarship | \$1000.00 |

KGF Grants

Sarah Lamm, PhD candidate at KU

\$3500.00 for Rocks and Rockets Event in Colby, Kansas

August 2026



Kansas Geological Foundation News

Students: The KGF awards scholarships each December and May. Check with your department chairs for applications. You must submit complete applications by the deadline.

Scholarship Applications for the Fall semester will be due by May 1, 2026.

Scholarship Applications for Spring semester will be due by December 1, 2026

Grants to help with research on Kansas related geology are also considered for aid.

The Kansas Geological Foundation Needs You!



By permission

The KGF provides the financial resources to sort, process and file, in-kind donations of geological data at the KGS library. Due in large part to the KGF this unique and rare well of information is being made available to all. Please consider telling your company management and colleagues about the benefits of a library that continues expanding in part because of the KGF.

We very much value and need your financial support.

KGF Officers and Board Members

Executive Director/Treasurer Kerry Parham
President - Beth Isern
Vice President - Rusty Mourning
Secretary - Tom Dudgeon

Board Members

Nick Hixson Dennis Hedke
Toby Eck Cristina Goodrich

Scholarships - Nick Hixson
Grants - Dennis Hedke
Publicity - Wes Hansen

PLEASE SUPPORT THE INTEGRATION PROJECT BY DONATING FINANCIALLY TO THE KANSAS GEOLOGICAL FOUNDATION

Kansas Geological Foundation Memorials

| KGS Member | Date Deceased | Memorial Established |
|-------------------------|---------------|----------------------|
| Dan Bowles | 09/89 | 1990 |
| John Brewer | 10/89 | 1990 |
| George Bruce | 08/89 | 1990 |
| Robert Gebhart | 01/90 | 1990 |
| Ray Anderson, Jr. | 11/90 | 1990 |
| Harold McNeil | 03/91 | 1991 |
| Millard W. Smith | 08/91 | 1991 |
| Clinton Engstrand | 09/91 | 1991 |
| M.F. "Ted" Bear | 10/91 | 1991 |
| James & Kathryn Gould | 11/91 | 1991 |
| E. Gail Carpenter | 06/91 | 1993 |
| Benton Brooks | 09/92 | 1992 |
| Robert C. Armstrong | 01/93 | 1993 |
| Nancy Lorenz | 02/93 | 1993 |
| Norman R. Stewart | 07/93 | 1993 |
| Robert W. Watchous | 12/93 | 1993 |
| J. George Klein | 07/94 | 1994 |
| Harold C.J. Terhune | 01/95 | 1995 |
| Carl Todd | 01/95 | 1995 |
| Don R. Pate | 03/95 | 1995 |
| R. James Gear | 05/95 | 1995 |
| Vernon Hess | 06/95 | 1995 |
| E. K. Edmiston | 06/95 | 1995 |
| Jack Rine | 07/95 | 1995 |
| Lee Cornell | 08/95 | 1995 |
| John Graves | 10/95 | 1995 |
| Wilson Rains | 10/95 | 1995 |
| Heber Beardmore, Jr. | 09/96 | 1996 |
| Elmer "Lucky" Opfer | 12/96 | 1996 |
| Raymond M. Goodin | 01/97 | 1997 |
| Donald F. Moore | 10/92 | 1997 |
| Gerald J. Kathol | 03/97 | 1997 |
| James D. Davies | 08/88 | 1997 |
| R. Kenneth Smith | 04/97 | 1997 |
| Robert L. Dilts | 05/97 | 1997 |
| Delmer L. Powers | 06/72 | 1997 |
| Gene Falkowski | 11/97 | 1997 |
| Arthur (Bill) Jacques | 01/98 | 1998 |
| Bus Woods | 01/98 | 1998 |
| Frank M. Brooks | 03/98 | 1998 |
| Robert F. Walters | 04/98 | 1998 |
| Stephen Powell | 04/98 | 1998 |
| Deane Jirrels | 05/98 | 1998 |
| William G. Iversen | 07/98 | 1998 |
| Ann E. Watchous | 08/98 | 1998 |
| W.R. "Bill" Murfin | 09/98 | 1998 |
| Donald L. Hellar | 11/98 | 1998 |
| Joseph E. Rakaskas | 01/99 | 1999 |
| Charles W. Steincamp | 02/99 | 1999 |
| Robert and Betty Glover | 10/96 | 1998 |
| Howard E. Schwerdtfeger | 11/98 | 1999 |
| W. W. "Brick" Wakefield | 03/99 | 1999 |
| V. Richard Hoover | 01/00 | 2000 |
| Warren E. Tomlinson | 01/00 | 2000 |
| James A. Morris | 01/00 | 2000 |
| Eric H. Jager | 03/00 | 2000 |
| Kenneth W. Johnson | 03/00 | 2000 |

Kansas Geological Foundation Memorials

| KGS Member | Date Deceased | Memorial Established |
|----------------------------|---------------|----------------------|
| Dean C. Schaaque | 03/00 | 2000 |
| Fred S. Lillibridge | 05/00 | 2000 |
| Jerry A. Langrehr | 07/00 | 2000 |
| Clark A. Roach | 07/00 | 2000 |
| Floyd W. "Bud" Mallonee | 10/00 | 2000 |
| Ralph W. Ruuwe | 09/00 | 2000 |
| Robert L. Slamal | 02/01 | 2001 |
| Jerold E. Jespersen | 06/01 | 2001 |
| William A. Sladek | 06/01 | 2001 |
| Harlan B. Dixon | 06/01 | 2001 |
| Edward B. Donnelly | 08/01 | 2001 |
| Richard P. Nixon | 02/02 | 2002 |
| Robert W. Frensley | 12/01 | 2002 |
| Gerald W. Zorger | 01/02 | 2002 |
| Don L. Calvin | 03/02 | 2002 |
| Claud Sheats | 02/02 | 2002 |
| Merle Britting | 2002 | 2002 |
| Harold Trapp | 11/02 | 2002 |
| Donald M. Brown | 11/02 | 2003 |
| Elwyn Nagel | 03/03 | 2003 |
| Robert Noll | 09/03 | 2003 |
| Benny Singleton | 09/03 | 2003 |
| Jay Dirks | 2003 | 2003 |
| J. Mark Richardson | 02/04 | 2004 |
| John "Jack" Barwick | 02/01 | 2004 |
| Richard Roby | 03/04 | 2004 |
| Ruth Bell Steinberg | 2004 | 2004 |
| Gordon Keen | 03/04 | 2004 |
| Lloyd Tarrant | 05/04 | 2004 |
| Robert J. "Rob" Dietterich | 08/96 | 2004 |
| Mervyn Mace | 12/04 | 2004 |
| Donald Hoy Smith | 04/05 | 2005 |
| Richard M. Foley | 06/05 | 2005 |
| Wayne Brinegar | 06/05 | 2005 |
| Charles B. Moore | 09/96 | 2005 |
| Jack Heathman | 05/06 | 2006 |
| Charles Kaiser | 09/06 | 2006 |
| Rod Sweetman | 08/06 | 2006 |
| Karl Becker | 10/06 | 2006 |
| Frank Hamlin | 10/06 | 2006 |
| Marvin Douglas | 12/06 | 2006 |
| Robert W. Hammond | 04/07 | 2007 |
| Eldon Frazey | 04/07 | 2007 |
| Pete Amstutz | 05/07 | 2007 |
| Charles Spradlin | 05/07 | 2007 |
| Donald R. "Bob" Douglass | 09/07 | 2007 |
| Vincent Hiebsch | 11/07 | 2007 |
| Glen C. Thrasher | 03/08 | 2008 |
| Peg Walters | 06/08 | 2008 |
| Theodore "Ted" Sandberg | 07/08 | 2008 |
| James Ralstin | 11/08 | 2008 |
| Earl Brandt | 04/09 | 2009 |
| Walter DeLozier | 05/09 | 2009 |
| Don D. Strong | 1/10 | 2010 |
| John Stone | 02/10 | 2010 |
| Craig Caulk | 03/10 | 2010 |
| Joseph E. Moreland, Jr. | 03/10 | 2010 |

Kansas Geological Foundation Memorials

| KGS Member | Date Deceased | Memorial Established |
|----------------------------|---------------|----------------------|
| Gene Garmon | 03/10 | 2010 |
| James F. Dilts | 05/10 | 2010 |
| Jerry Pike | 05/10 | 2010 |
| Donald Hollar | 06/10 | 2010 |
| Delbert Costa | 08/10 | 2010 |
| John Tanner | 08/10 | 2010 |
| William (Bill) Owen | 09/10 | 2010 |
| Harold (Hal) Brown | 10/10 | 2010 |
| Edmund G. Lorenz | 11/10 | 2010 |
| Thomas E. Black | 05/11 | 2011 |
| Wayne E. Walcher | 07/11 | 2011 |
| Henry F. Filson | 07/11 | 2011 |
| Thomas Ray | 07/11 | 2011 |
| Edgar E. Smith | 09/11 | 2012 |
| Marilyn Messinger | 06/13 | 2013 |
| Micheal Mitchell | 09/13 | 2013 |
| Orvie Howell | 11/13 | 2013 |
| James Thompson | 11/13 | 2013 |
| Dick Rowland | 09/13 | 2014 |
| Robbie Thompson | 12/13 | 2014 |
| Kris Kennedy | 04/14 | 2015 |
| Annette Hedke | 02/15 | 2015 |
| James Devlin | 04/15 | 2015 |
| Robert Gensch | 09/15 | 2015 |
| Jerald Rains | 05/16 | 2016 |
| Max Houston | 05/16 | 2016 |
| Robert "Gus" Messinger | 01/17 | 2017 |
| Jimmy Wayne Gowens | 04/17 | 2017 |
| Walter H. Martz Jr. | 01/18 | 2018 |
| Gary Sandlin | 01/17 | 2018 |
| Douglas McGinness | 12/16 | 2018 |
| Allen Siemens | 06/18 | 2018 |
| Ernest R. "Ernie" Morrison | 09/18 | 2018 |
| E. G. "Elbie" McNeil | 12/18 | 2018 |
| Robert Maxwell (Bob) Euwer | 1/19 | 2019 |
| J. Fred Hambright | 12/18 | 2019 |
| W. Lynn Watney | 7/19 | 2019 |
| Byron Hummon | 12/18 | 2019 |
| Mike Raymond | 11/19 | 2019 |
| James Roberts, Jr. | 3/19 | 2019 |
| Herb Johnson | 8/19 | 2020 |
| Lloyd Parrish | 2/20 | 2020 |
| Bruce Reed | 5/20 | 2020 |
| Bob Scull | 6/20 | 2020 |
| Thornton E. Anderson | 7/20 | 2020 |
| Don Shawver | 12/16 | 2020 |
| Phillip Hart | 12/20 | 2021 |
| Timothy Lauer | 05/21 | 2021 |
| Fredrick Stump | 09/21 | 2021 |
| Larry J. Richardson | 10/21 | 2021 |
| Robert Cowdery | 12/23 | 2023 |
| Bill Ham | 12/21 | 2023 |
| Richard "Steve" Davis | 08/24 | 2025 |
| Dennis Michael Gleason | 5/25 | 2026 |
| Robert "Bob" Stolzle | 02/26 | 2026 |

18 Drilling Rigs
To depth of 9,500 ft.



WESTERN KANSAS
SOUTHERN NEBRASKA
EASTERN COLORADO
OKLAHOMA PANHANDLE

For contract information contact:

William Murfin
Drilling Manager

316-258-8888 (Direct)
316-267-3241 (Main)

250 N. Water, Ste. 300
Wichita, KS 67202

DUKE
DRILLING COMPANY

ROTARY DRILLING CONTRACTOR

620 Hubbard PO Box 823
Great Bend, KS 67530

100 S. Main, Ste. 410,
Wichita, KS 67202

Your Company

1/8 page ad here

BULLETIN CONTENT POLICY

Effective January 1, 2018, only ads for service companies and geologists offering their services will be permitted in the KGS Bulletin. Furthermore, only content of geologic interest or official KGS functions (technical talks, annual banquet, golf tourney, picnic etc.) will be permitted in this bulletin. This policy is in keeping with maintaining a professional standard for this publication. Any interpretation of this policy rests solely with the editor of this bulletin.



AAPG Needs You!

Professional geoscientists, share your world!

The Mid Continent Section has 17 AAPG Student Chapters, but only 3 Visiting Geoscientists...which makes it almost impossible to have a professional geoscientist visit to each school at least once a year or even once every two years. The aim of AAPG's program is to give students a flavor of a professional life in energy resources. It also hopes to encourage dialog between industry and academia. To be a Visiting Geoscientist bearing the AAPG flag, you are asked to have at least 5 years of experience and make at least one visit per year to a university. It can be a school with an AAPG Student Chapter, or a college/university without one. Your choice.

The Mid Continent schools with Student Chapters are: Missouri University, Fort Hays State University, Iowa State University, Kansas State University, Missouri State University, University of Nebraska, Northwest Missouri State University, Oklahoma State University, University of Oklahoma, University of Arkansas, University of Iowa, University of Kansas, University of Missouri, Columbia University of Tulsa and Wichita State University.

Contact Robbie Gries, co-Chair VGP committee, Denver, if you are interested in learning more. rrgries@aol.com

May 2026

| Sun | Mon | Tue | Wed | Thu | Fri | Sat |
|-----|-----|-----|-----------------|-----|-----|-----|
| | | | | | 1 | 2 |
| 3 | 4 | 5 | 6 | 7 | 8 | 9 |
| 10 | 11 | 12 | 13 KGS Board | 14 | 15 | 16 |
| 17 | 18 | 19 | 20 | 21 | 22 | 23 |
| 24 | 25 | 26 | 27 | 28 | 29 | 30 |
| 31 | | | | | | |

June 2026

| Sun | Mon | Tue | Wed | Thu | Fri | Sat |
|-----|-----|-----------------|-----|-----|-----|-----|
| | 1 | 2 | 3 | 4 | 5 | 6 |
| 7 | 8 | 9 | 10 | 11 | 12 | 13 |
| 14 | 15 | 16 | 17 | 18 | 19 | 20 |
| 21 | 22 | 23 KGS Board | 24 | 25 | 26 | 27 |
| 28 | 29 | 30 | | | | |